

Wind Resource Summary for Telluride Site

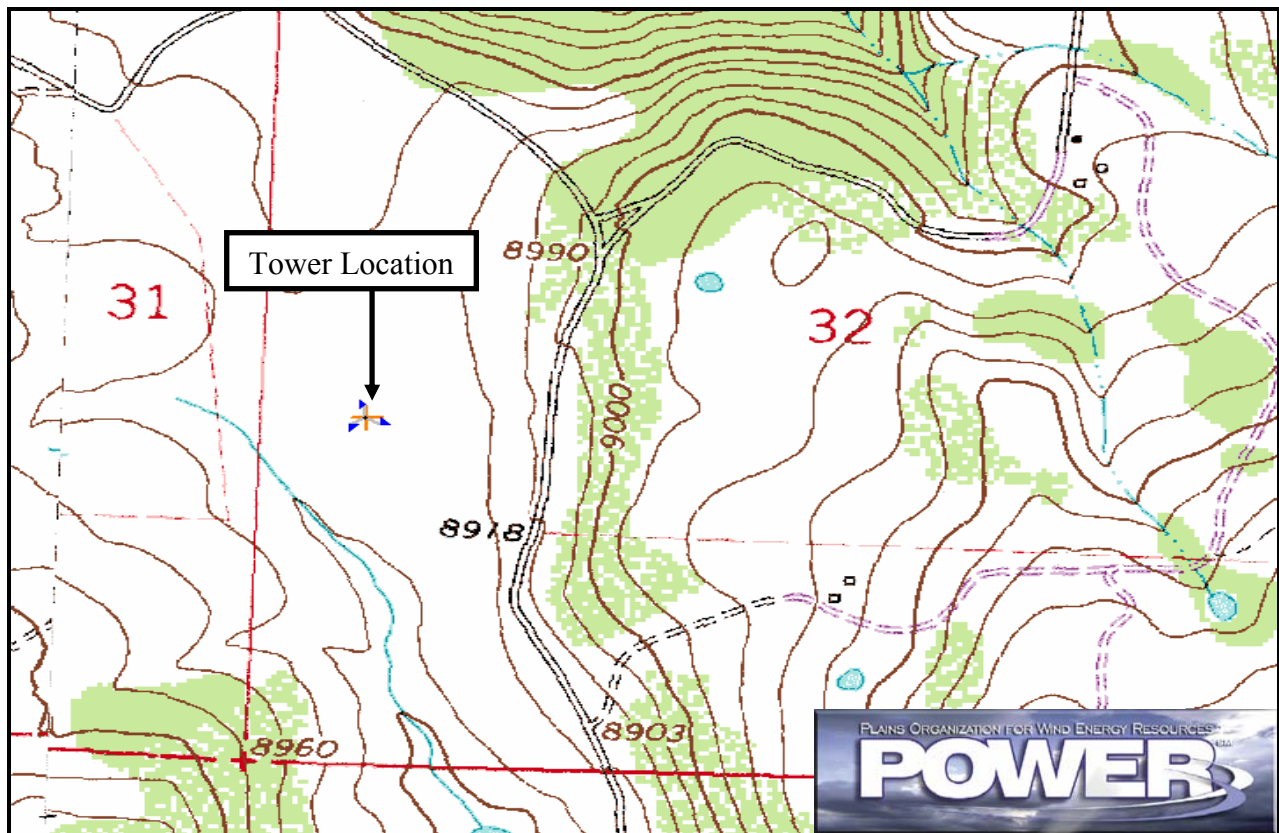
Colorado Anemometer Loan Program

Monitoring Period:^a 4/19/2006 – 6/13/2007

Site Description:

Latitude: N 38° 01' 11"	Township: 44 N
Longitude: W 107° 59' 44"	Range: 10 W
Elevation: 8900 feet	Section: 32
Tower Type: NRG Tilt-Up	Tower Height: 98 feet

The site is approximately 12 miles northwest of the town of Telluride, Colorado. The site is situated on Hastings Mesa. The Mesa is bounded by the San Miguel River on its south side. The vegetation around the site is primarily grass and brush.



Summary Wind Data:	98 ft AGL^b
Mean Wind Speed	9.8 mph
Maximum, 10-min Mean Wind Speed	51.6 mph – 3/27/2007 11:40 a.m.
Estimated Wind Power Class^c	Class 1 (79 W/m ²)

^a Data recovery rate was 99%.

^b Above ground level.

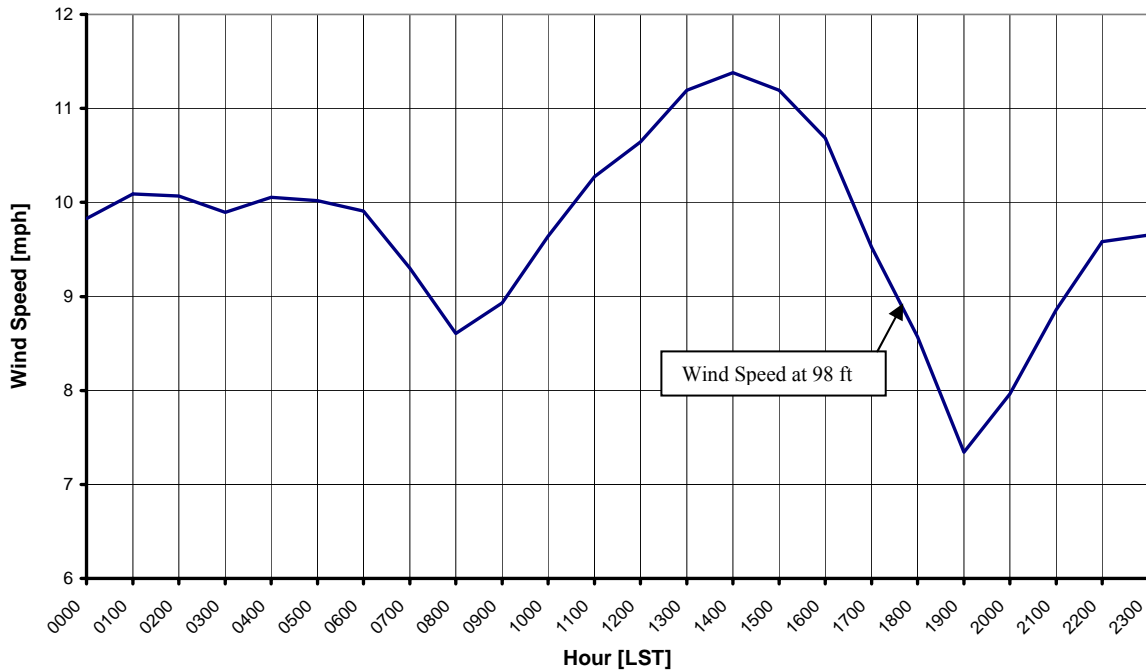
^c Air temperature was not factored into calculation.

Average Hourly Wind Speeds

98 ft AGL

LST ^d	mph	m/s
0000	9.8	4.39
0100	10.1	4.51
0200	10.1	4.50
0300	9.9	4.42
0400	10.1	4.49
0500	10.0	4.48
0600	9.9	4.43
0700	9.3	4.16
0800	8.6	3.85
0900	8.9	3.99
1000	9.6	4.31
1100	10.3	4.59
1200	10.6	4.76
1300	11.2	5.00
1400	11.4	5.09
1500	11.2	5.00
1600	10.7	4.78
1700	9.5	4.26
1800	8.6	3.83
1900	7.3	3.28
2000	8.0	3.56
2100	8.9	3.96
2200	9.6	4.28
2300	9.7	4.32

Colorado Anemometer Loan Program – Telluride Site
4/19/2006 – 6/13/07



^d Local standard time.



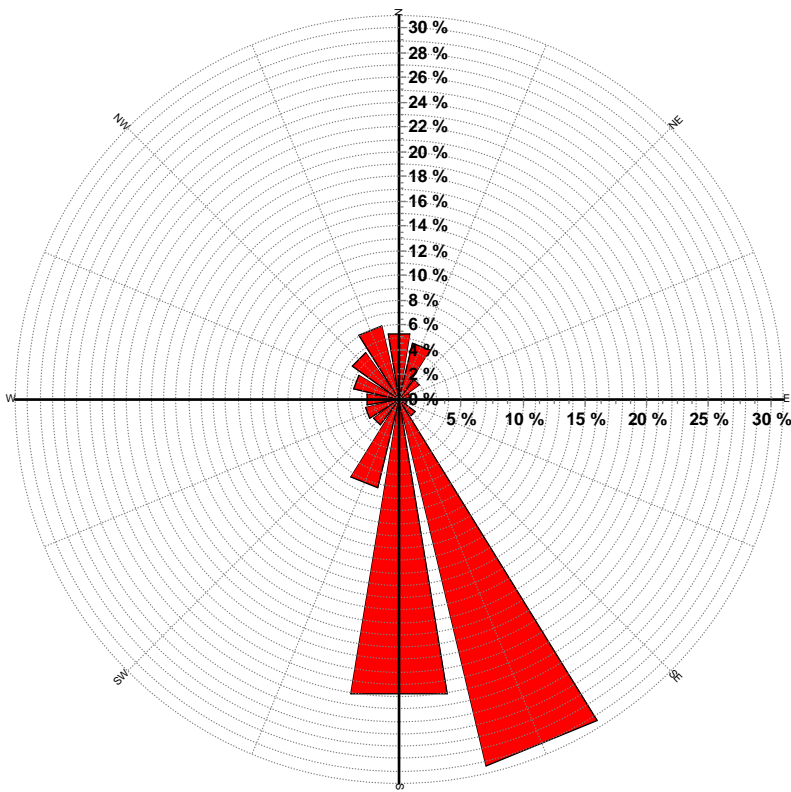
Energy & Environmental Research Center
701-777-5000 or bstevens@undeerc.org

Creation Date: 7/6/2007

Wind Directional Frequency

Winds from the...	Frequency (%)
NNW	6.1
NW	4.6
WNW	3.8
W	2.6
WSW	2.8
SW	2.5
SSW	7.3
S	24.1
SSE	30.5
SE	1.6
ESE	0.6
E	0.5
ENE	0.9
NE	2.0
NNE	4.6
N	5.4

Colorado Anemometer Loan Program – Telluride Site
 Wind Rose for 98 ft AGL
 4/19/2006 – 6/13/2007



Energy & Environmental Research Center
 701-777-5000 or bstevens@underc.org

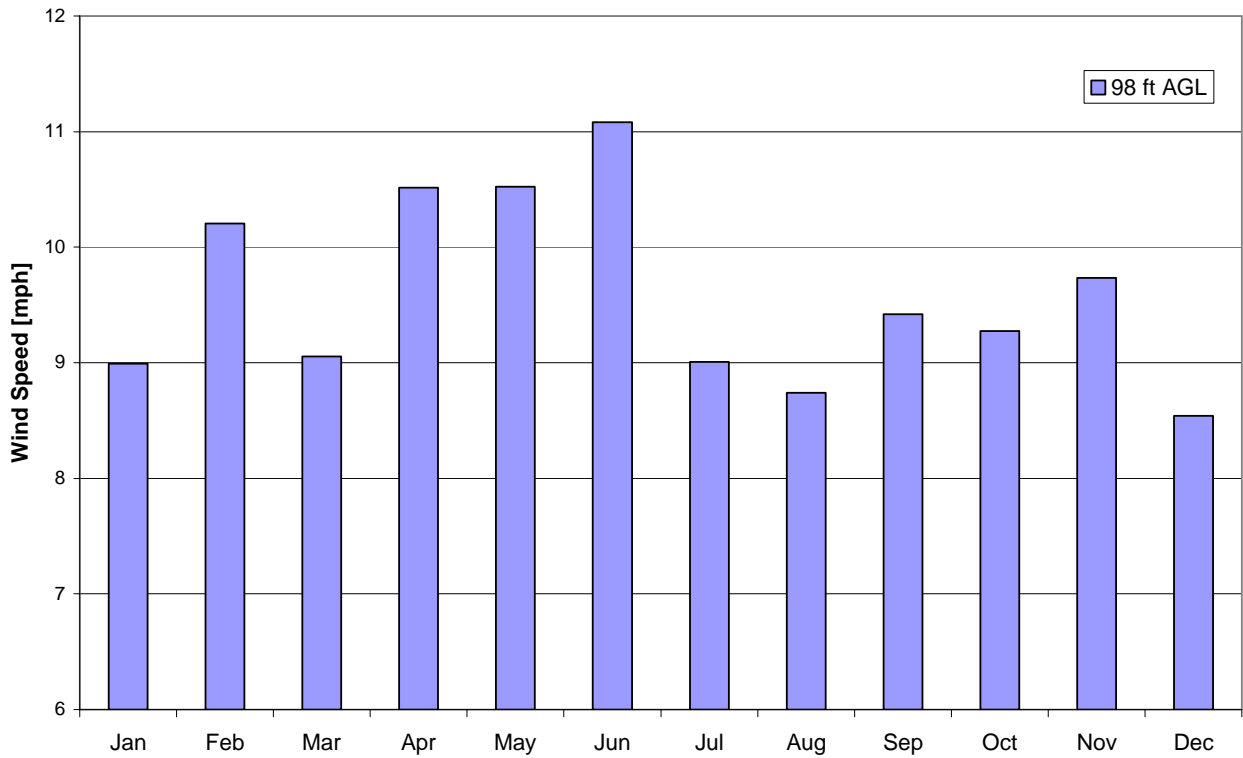
Creation Date: 7/6/2007

Monthly Wind Speed Averages

66 ft AGL

Month	mph	m/s
Jan	9.0	4.02
Feb	10.2	4.56
Mar	9.1	4.05
Apr	10.5	4.70
May	10.5	4.70
Jun	11.1	4.95
Jul	9.0	4.03
Aug	8.7	3.91
Sep	9.4	4.21
Oct	9.3	4.15
Nov	9.7	4.35
Dec	8.5	3.82

Colorado Anemometer Loan Program – Telluride Site
4/19/2006 – 6/13/2007



Energy & Environmental Research Center
701-777-5000 or bstevens@undeerc.org

Creation Date: 7/6/2007