

Wind Resource Summary for West Walsenburg Site

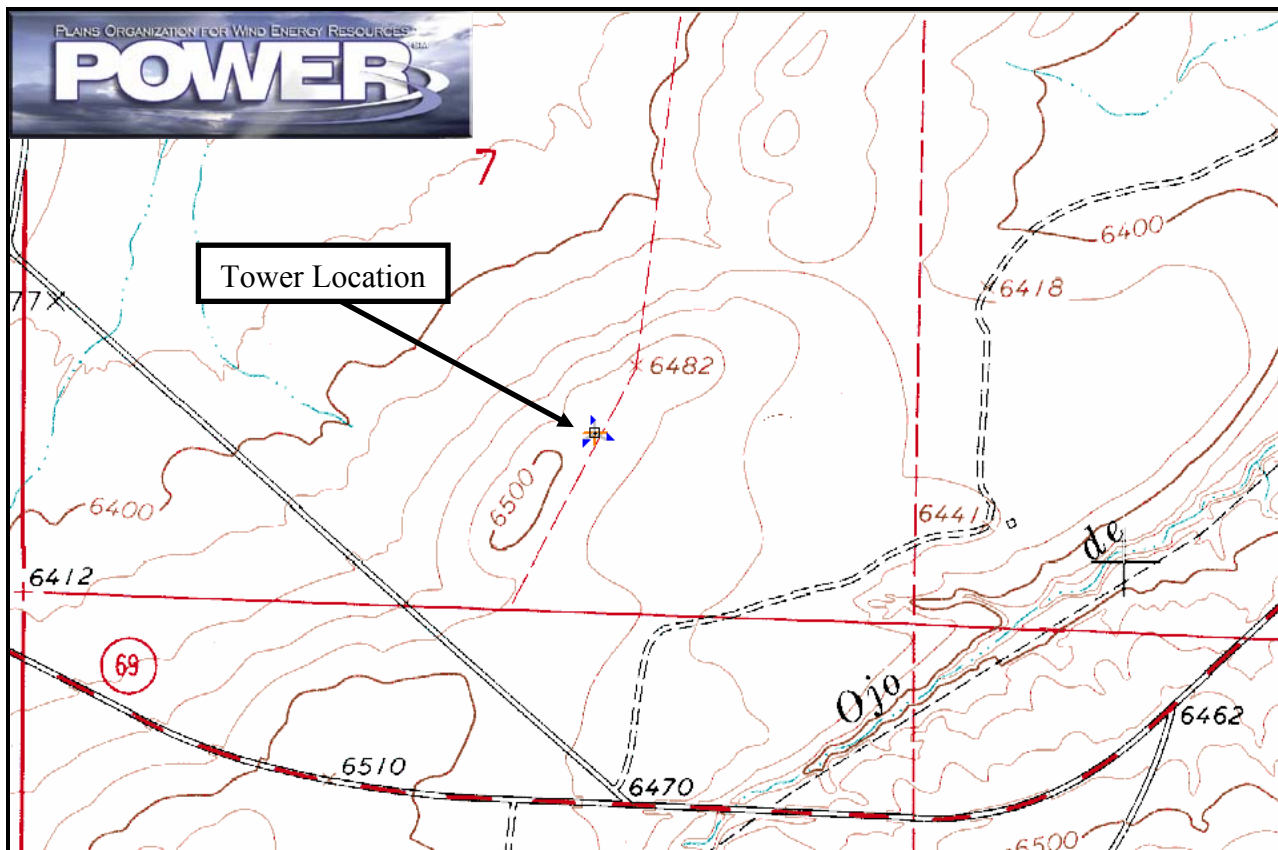
San Isabel Electric Association, Inc.

Monitoring Period:^a 11/3/2004 – 8/17/2005

Site Description:

Latitude: N 37° 42' 38"	Township: 27 S
Longitude: W 104° 55' 41"	Range: 67 W
Elevation: 6499 feet	Section: 7
Tower Type: NRG Tilt-Up	Tower Height: 98 feet

The site is approximately 10 miles northwest of the town of Walsenburg, Colorado. The tower is situated on the east slopes of the Rocky Mountains. Two miles to the north is the Huerfano River which is oriented in a west-to-east direction. The vegetation around the site is primarily grassland and brush.



Summary Wind Data:	98 ft AGL^b
Mean Wind Speed	15.7 mph
Maximum, 10-min Mean Wind Speed	67.8 mph – 1/9/2005 6:20 a.m.
Estimated Wind Power Class^c	Class 5 (402 W/m ²)

^a Data recovery rate was 97%.

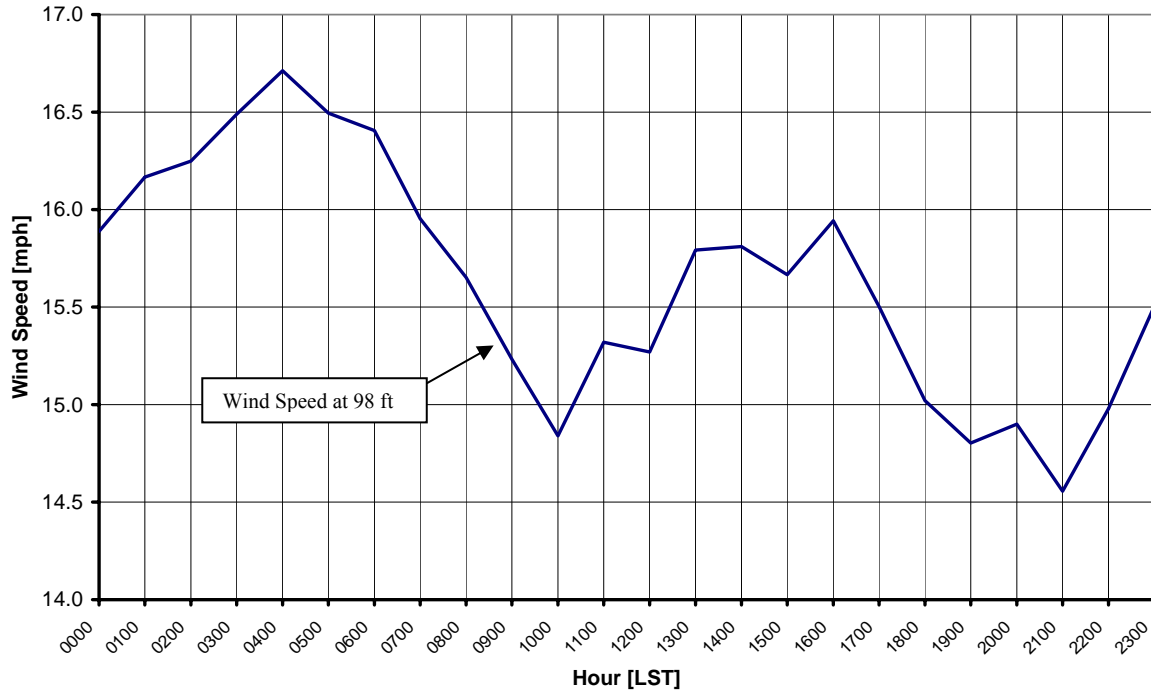
^b Above ground level.

^c Air temperature was not factored into calculation.

Average Hourly Wind Speeds

98 ft AGL		
LST ^d	mph	m/s
0000	15.9	7.10
0100	16.2	7.23
0200	16.2	7.26
0300	16.5	7.37
0400	16.7	7.47
0500	16.5	7.37
0600	16.4	7.33
0700	16.0	7.13
0800	15.7	7.00
0900	15.2	6.81
1000	14.8	6.63
1100	15.3	6.85
1200	15.3	6.83
1300	15.8	7.06
1400	15.8	7.07
1500	15.7	7.00
1600	15.9	7.13
1700	15.5	6.93
1800	15.0	6.71
1900	14.8	6.62
2000	14.9	6.66
2100	14.6	6.51
2200	15.0	6.70
2300	15.5	6.93

San Isabel Electric Association, Inc. – West Walsenburg Site
11/3/2004 – 8/17/2005



^d Local standard time.



Energy & Environmental Research Center
701-777-5000 or bstevens@undeerc.org

Creation Date: 9/13/2005

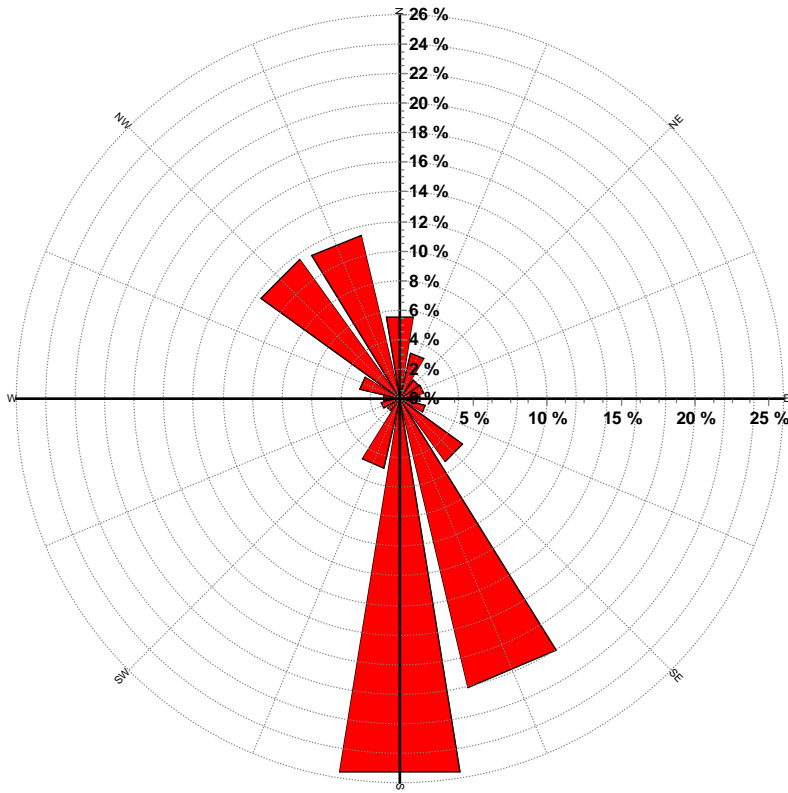
Wind Directional Frequency*

Winds from the... Frequency (%)

NNW	11.4
NW	11.6
WNW	2.8
W	1.1
WSW	1.3
SW	1.0
SSW	4.8
S	25.6
SSE	20.1
SE	5.2
ESE	1.8
E	1.3
ENE	1.6
NE	1.6
NNE	3.2
N	5.6

* Wind direction statistics based on data from 11/3/2004 through 12/9/2004.

San Isabel Electric Association, Inc. – West Walsenburg Site
Wind Rose for 98 ft AGL
11/3/2004 – 12/9/2004



Energy & Environmental Research Center
701-777-5000 or bstevens@undeerc.org

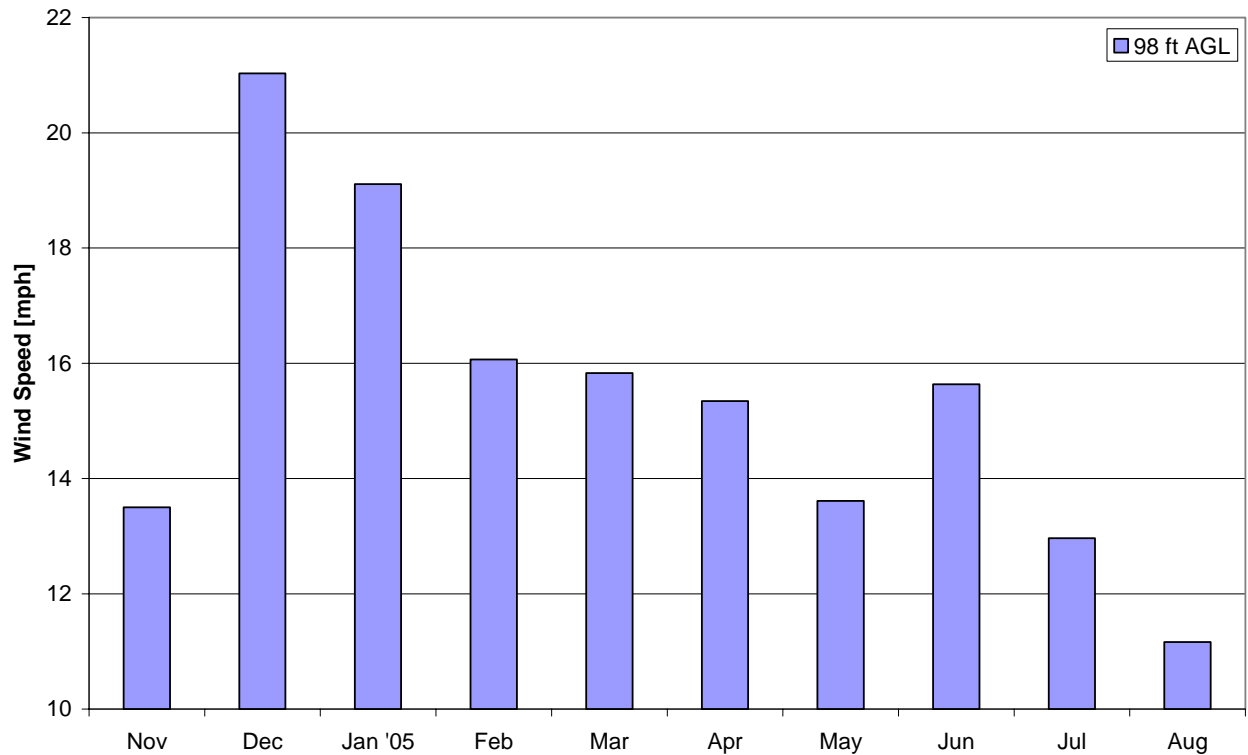
Creation Date: 9/13/2005

Monthly Wind Speed Averages

98 ft AGL

Month	mph	m/s
Nov	13.5	6.04
Dec	21.0	9.40
Jan '05	19.1	8.54
Feb	16.1	7.18
Mar	15.8	7.08
Apr	15.3	6.86
May	13.6	6.09
Jun	15.6	6.99
Jul	13.0	5.80
Aug	11.2	4.99

San Isabel Electric Association, Inc. – West Walsenburg Site
11/3/2004 – 8/17/2005



Energy & Environmental Research Center
701-777-5000 or bstevens@undeerc.org