

Wind Resource Summary for West Walsenburg #2 Site

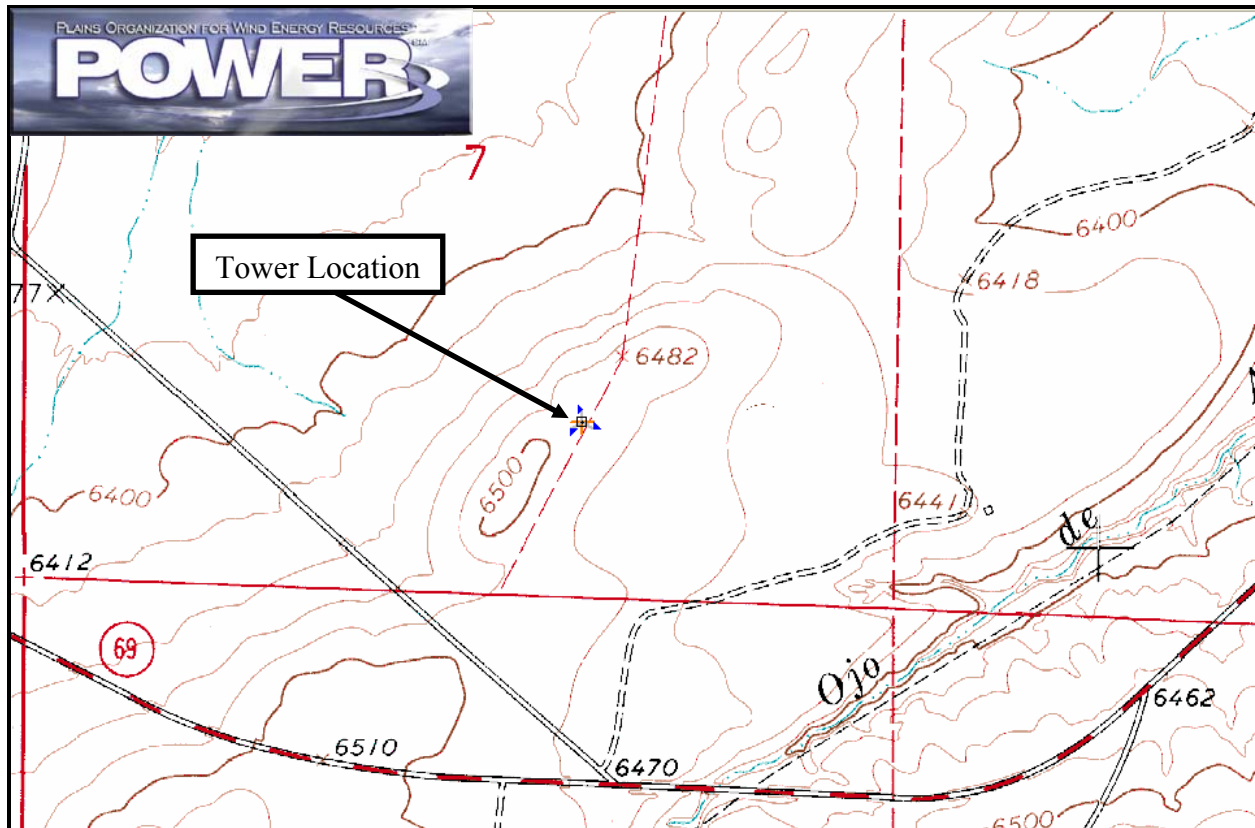
San Isabel Electric Association, Inc.

Monitoring Period^a: 8/18/2005 – 10/17/2006

Site Description:

Latitude: N 37° 42' 38"	Township: 27 S
Longitude: W 104° 55' 41"	Range: 67 W
Elevation: 6499 feet	Section: 7
Tower Type: NRG Tilt-Up	Tower Height: 164 feet

The original 20-meter tower at the West Walsenburg site was removed and replaced with a 50-meter tower. The site is approximately 10 miles northwest of the town of Walsenburg, Colorado. The tower is situated on the east slopes of the Rocky Mountains. Two miles to the north is the Huerfano River which is oriented in a west-to-east direction. The vegetation around the site is primarily grassland and brush.



Summary Wind Data	98 ft AGL ^b	131 ft AGL	164 ft AGL
Mean Wind Speed	17.0 mph	16.6 mph ^c	17.5 mph
Maximum, 10-min Mean Wind Speed	71.8 mph at 164 ft AGL – 11/3/2005 3:10 p.m.		
Estimated Wind Power Class ^d	Class 5 (540 W/m ² at 164 ft AGL)		

^a Data recovery rate at 98, 131 and 164 ft AGL was 98%, 94% and 98%, respectively.

^b Above ground level.

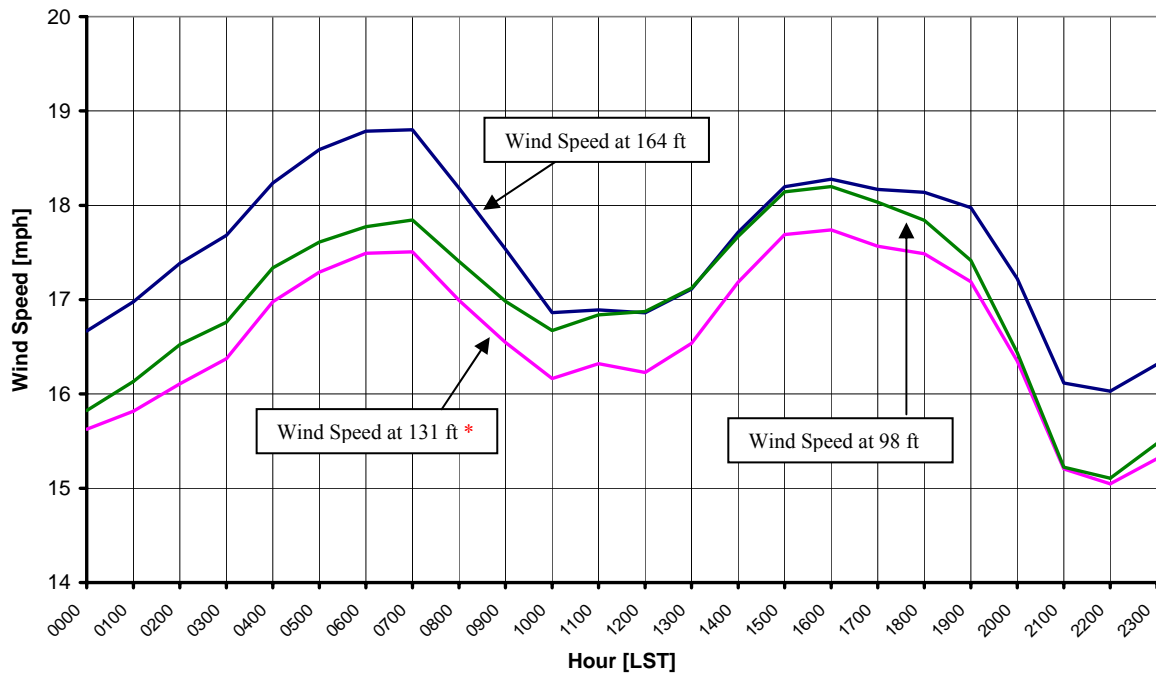
^c Mean wind speed decreases with height due to measurement error.

^d Air temperature was not factored into calculations.

Average Hourly Wind Speeds

LST ^d	164 ft AGL		131 ft AGL		98 ft AGL	
	mph	m/s	mph	m/s	mph	m/s
0000	16.7	7.45	15.6	6.99	15.8	7.07
0100	17.0	7.59	15.8	7.07	16.1	7.21
0200	17.4	7.77	16.1	7.20	16.5	7.39
0300	17.7	7.90	16.4	7.32	16.8	7.49
0400	18.2	8.15	17.0	7.59	17.3	7.75
0500	18.6	8.31	17.3	7.73	17.6	7.87
0600	18.8	8.40	17.5	7.82	17.8	7.95
0700	18.8	8.41	17.5	7.83	17.8	7.98
0800	18.2	8.13	17.0	7.60	17.4	7.78
0900	17.5	7.84	16.5	7.40	17.0	7.59
1000	16.9	7.54	16.2	7.23	16.7	7.45
1100	16.9	7.55	16.3	7.30	16.8	7.53
1200	16.9	7.54	16.2	7.25	16.9	7.54
1300	17.1	7.65	16.5	7.39	17.1	7.65
1400	17.7	7.92	17.2	7.68	17.7	7.90
1500	18.2	8.13	17.7	7.91	18.1	8.11
1600	18.3	8.17	17.7	7.93	18.2	8.14
1700	18.2	8.12	17.6	7.85	18.0	8.06
1800	18.1	8.11	17.5	7.82	17.8	7.98
1900	18.0	8.04	17.2	7.68	17.4	7.79
2000	17.2	7.70	16.3	7.31	16.4	7.35
2100	16.1	7.21	15.2	6.80	15.2	6.81
2200	16.0	7.17	15.0	6.73	15.1	6.75
2300	16.3	7.29	15.3	6.84	15.5	6.92

San Isabel Electric Association, Inc. – West Walsenburg 2 Site
8/18/2005 – 10/17/2006



^d Local standard time.

* Measurement error.



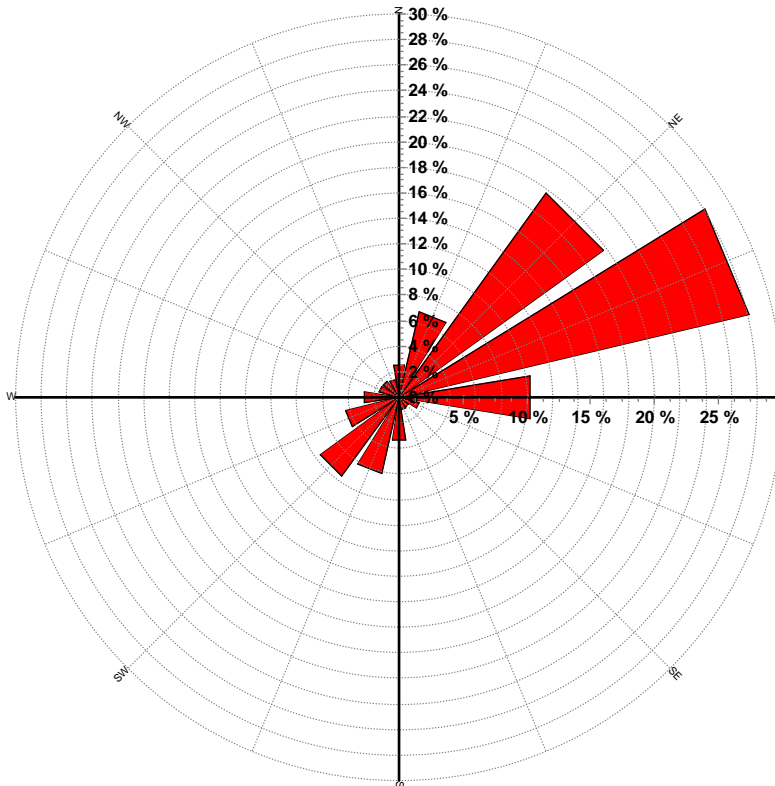
Energy & Environmental Research Center
701-777-5000 or bstevens@undeerc.org

Wind Directional Frequency*

Winds from the...	Frequency (%)
NNW	1.4
NW	1.5
WNW	1.6
W	2.7
WSW	4.3
SW	7.6
SSW	6.2
S	3.4
SSE	1.0
SE	0.9
ESE	1.6
E	10.4
ENE	28.1
NE	19.7
NNE	6.9
N	2.6

* Results are suspect. Wind direction sensors malfunction beginning 7/14/2006.

San Isabel Electric Association, Inc. – West Walsenburg 2 Site
 Wind Rose for 164 ft AGL
 8/18/2005 – 7/14/2006



Energy & Environmental Research Center
 701-777-5000 or bstevens@undeerc.org

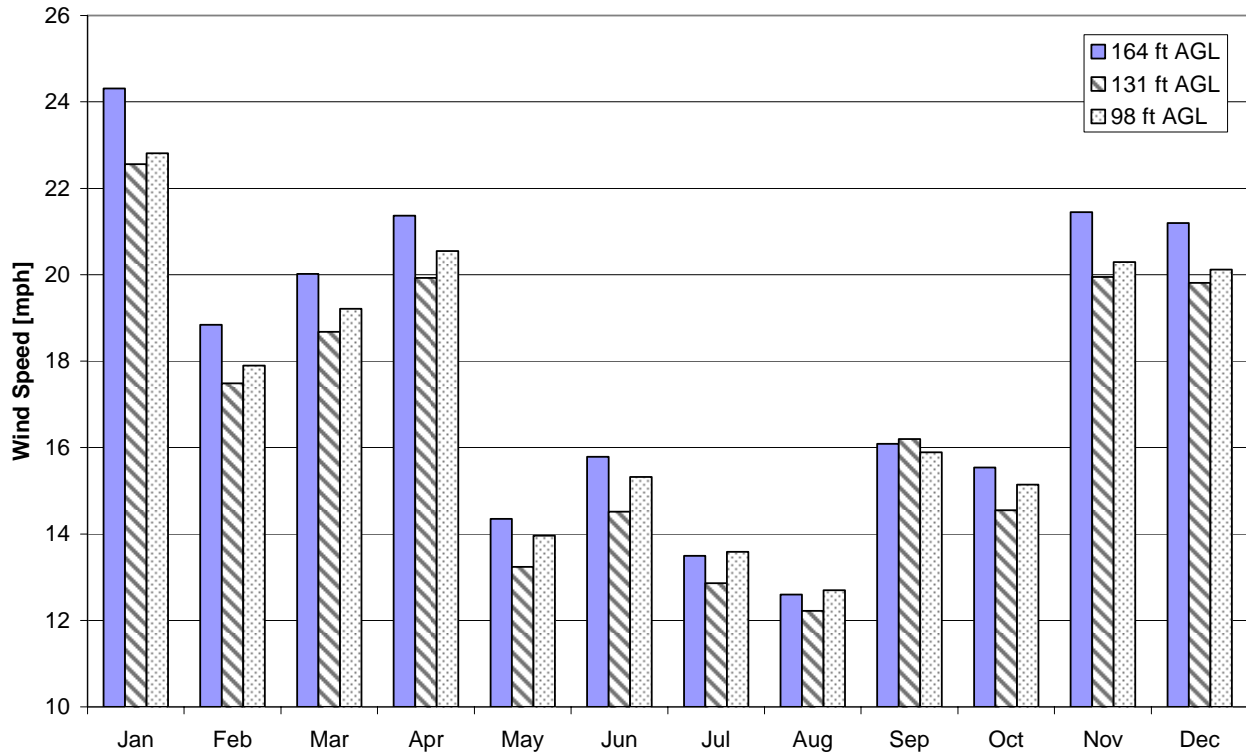
Creation Date: 11/17/2006

Monthly Wind Speed Averages*

Month	164 ft AGL		131 ft AGL		98 ft AGL	
	mph	m/s	mph	m/s	mph	m/s
Jan	24.3	10.87	22.6	10.08	22.8	10.20
Feb	18.8	8.42	17.5	7.82	17.9	8.00
Mar	20.0	8.95	18.7	8.35	19.2	8.59
Apr	21.4	9.55	19.9	8.91	20.6	9.19
May	14.4	6.42	13.2	5.92	14.0	6.24
Jun	15.8	7.06	14.5	6.49	15.3	6.85
Jul	13.5	6.03	12.9	5.75	13.6	6.08
Aug	12.6	5.63	12.2	5.46	12.7	5.68
Sep	16.1	7.19	16.2	7.24	15.9	7.10
Oct	15.5	6.95	14.5	6.50	15.1	6.77
Nov	21.4	9.59	19.9	8.92	20.3	9.07
Dec	21.2	9.47	19.8	8.85	20.1	8.99

* Mean wind speed decreases with height due to measurement error.

San Isabel Electric Association, Inc. – West Walsenburg 2 Site
8/18/2005 – 10/17/2006



Energy & Environmental Research Center
701-777-5000 or bstevens@underc.org