

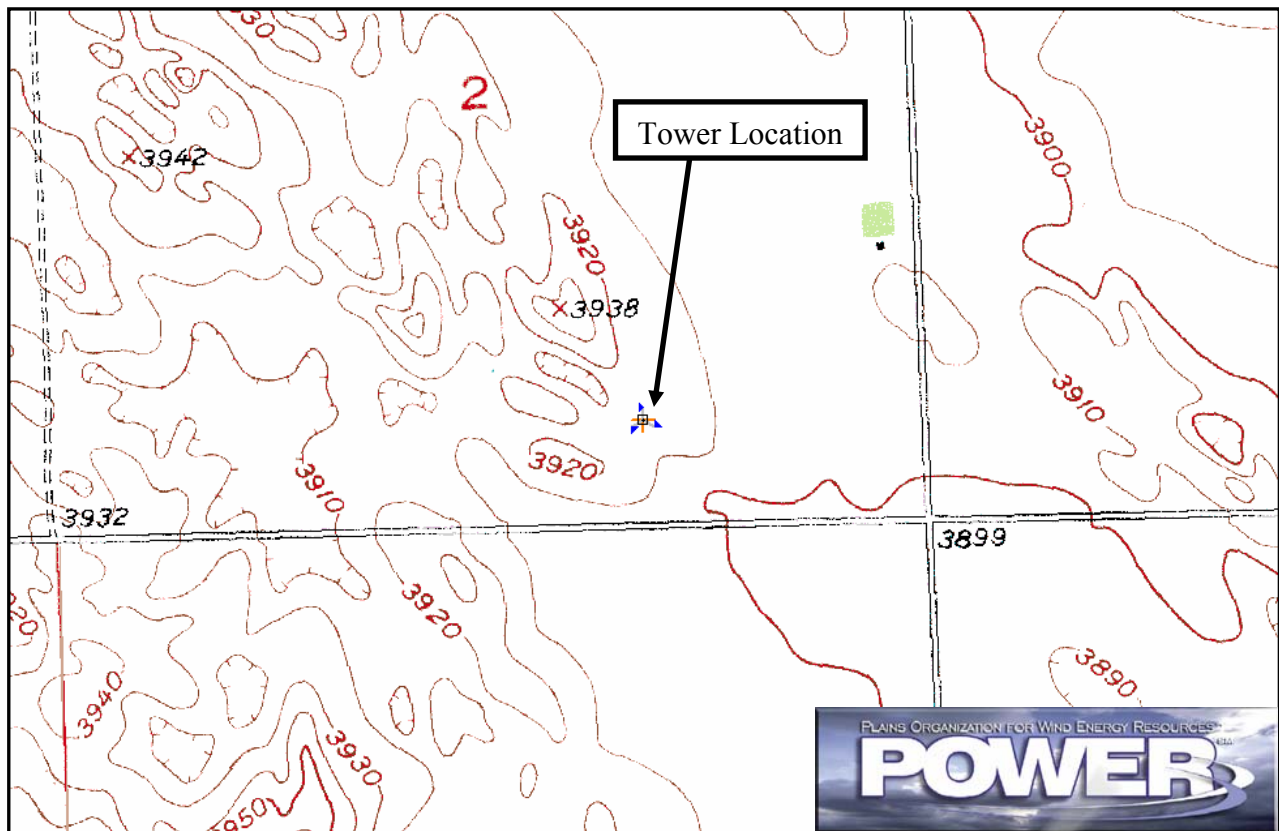
Wind Resource Summary for Sedgwick Site

Colorado Anemometer Loan Program
Monitoring Period:^a 7/9/2004 – 7/8/2005

Site Description:

Latitude: N 40° 46' 49"	Township: 9 N
Longitude: W 102° 26' 45"	Range: 46 W
Elevation: 3932 feet	Section: 2
Tower Type: NRG Tilt-Up	Tower Height: 66 feet

The site is approximately 11.3 miles south-southeast of the town of Sedgwick, Colorado. It is also 4 miles southeast of Mark's Butte which is the highest point in the county. The tower is located in the middle of pasture, but cropland comprises a significant portion of the landscape. Other than the butte, the terrain is mostly gentle rolling hills.



Summary Wind Data:	66 ft AGL^b
Mean Wind Speed	13.4 mph
Maximum, 10-min Mean Wind Speed	56.4 mph – 4/5/2005 7:50 a.m.
Mean Wind Power Density^c	Class 3 (212 W/m ²)

^a Data recovery rate was 98%.

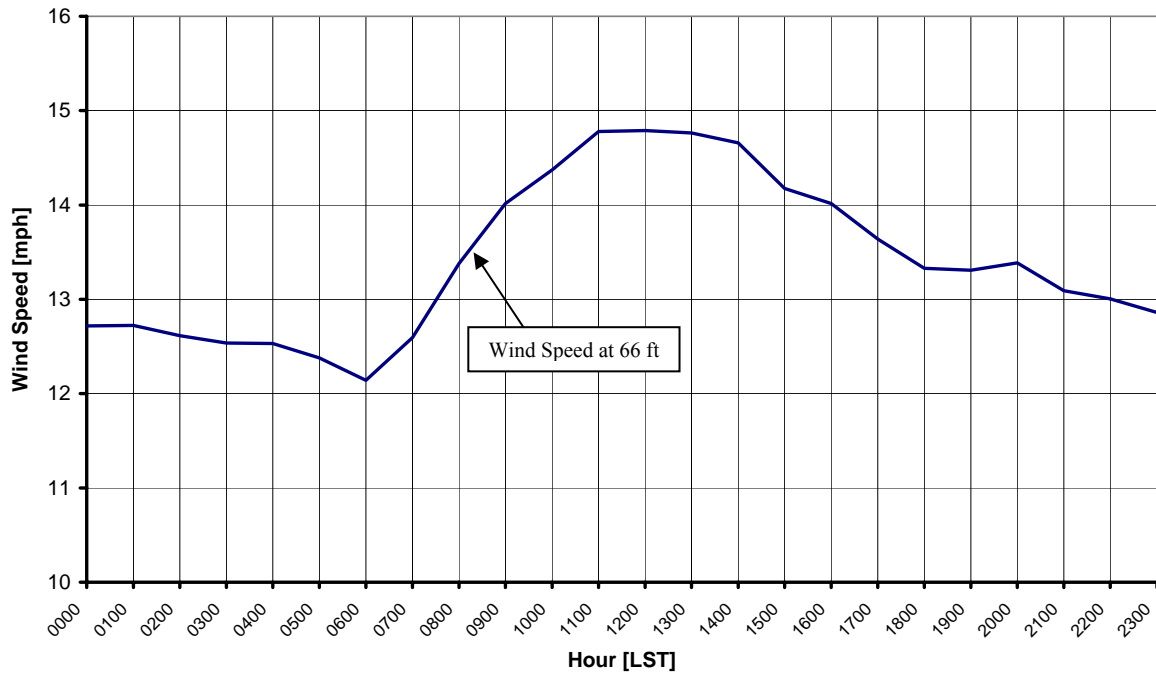
^b Above ground level.

^c Air temperature was not factored into calculation.

Average Hourly Wind Speeds

LST ^d	66 ft AGL	
	mph	m/s
0000	12.7	5.69
0100	12.7	5.69
0200	12.6	5.64
0300	12.5	5.60
0400	12.5	5.60
0500	12.4	5.53
0600	12.1	5.43
0700	12.6	5.63
0800	13.4	5.98
0900	14.0	6.26
1000	14.4	6.43
1100	14.8	6.61
1200	14.8	6.61
1300	14.8	6.60
1400	14.7	6.55
1500	14.2	6.34
1600	14.0	6.26
1700	13.6	6.10
1800	13.3	5.96
1900	13.3	5.95
2000	13.4	5.98
2100	13.1	5.85
2200	13.0	5.81
2300	12.9	5.75

Colorado Anemometer Loan Program – Sedgwick Site
7/9/2004 – 7/8/2005



^d Local standard time.



Energy & Environmental Research Center
701-777-5000 or bstevens@undeerc.org

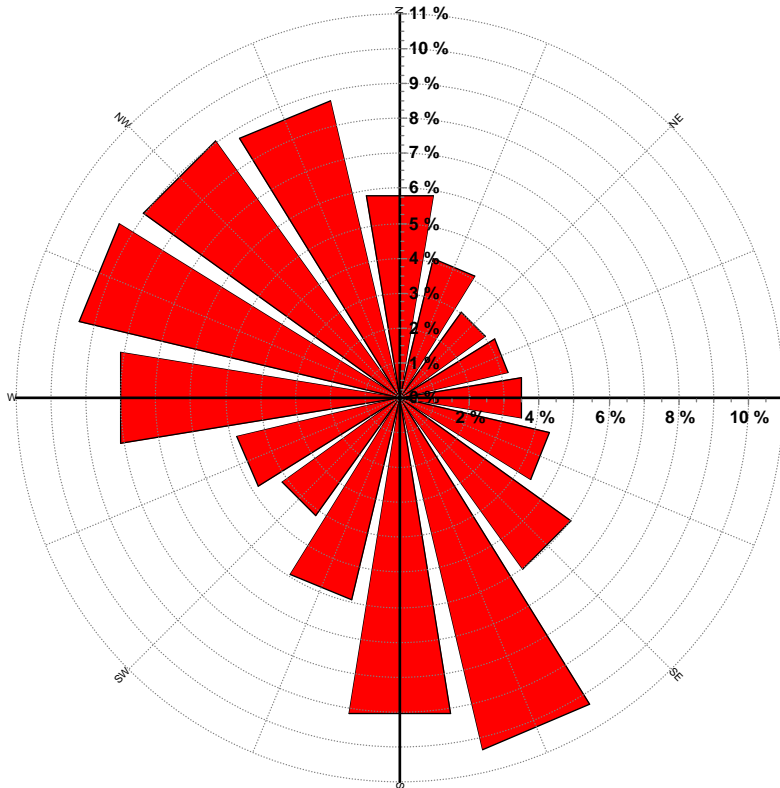
Creation Date: 7/21/2005

Wind Directional Frequency

Winds from the... Frequency (%)

NNW	8.7
NW	9.1
WNW	9.5
W	8.1
WSW	4.8
SW	4.2
SSW	5.9
S	9.2
SSE	10.3
SE	6.1
ESE	4.4
E	3.5
ENE	3.2
NE	3.0
NNE	4.1
N	5.9

Colorado Anemometer Loan Program – Sedgwick Site
Wind Rose for 66 ft AGL
7/9/2004 – 7/8/2005



Energy & Environmental Research Center
701-777-5000 or bstevens@underc.org

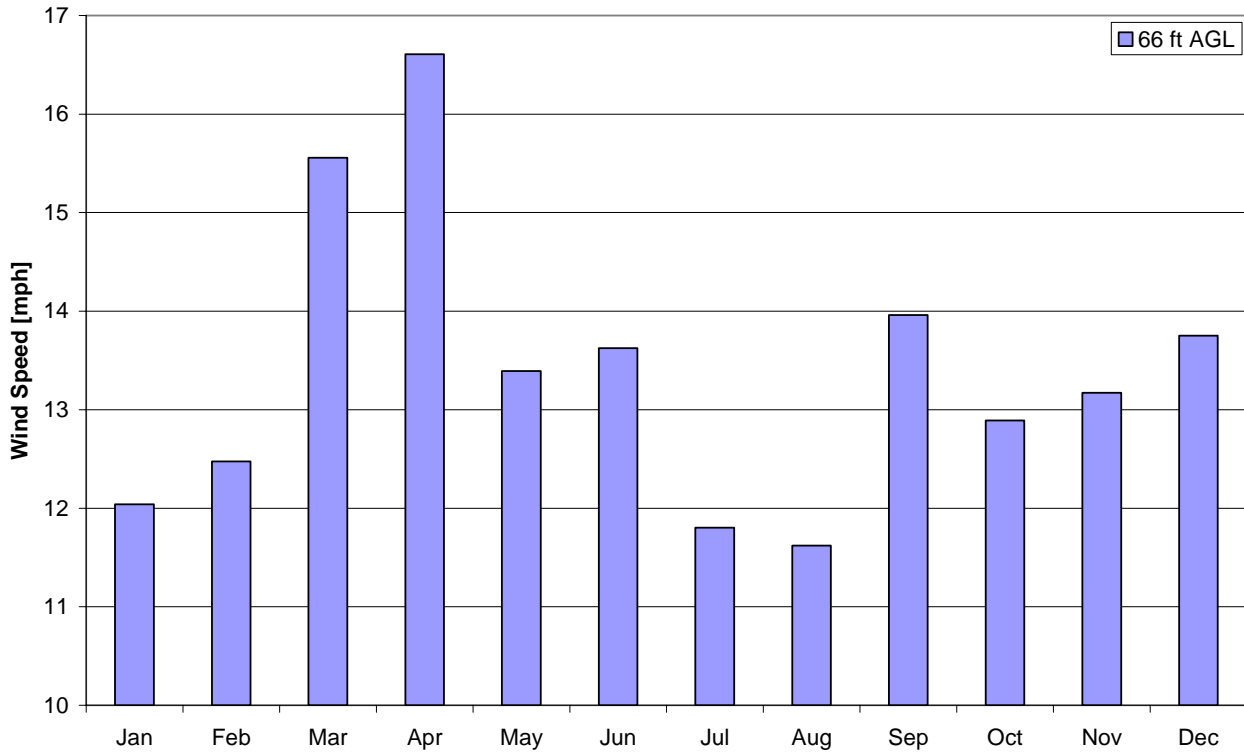
Creation Date: 7/21/2005

Monthly Wind Speed Averages

66 ft AGL

Month	mph	m/s
Jan	12.0	5.38
Feb	12.5	5.58
Mar	15.6	6.96
Apr	16.6	7.42
May	13.4	5.99
Jun	13.6	6.09
Jul	11.8	5.28
Aug	11.6	5.20
Sep	14.0	6.24
Oct	12.9	5.76
Nov	13.2	5.89
Dec	13.8	6.15

Colorado Anemometer Loan Program – Sedgwick Site
7/9/2004 – 7/8/2005



Energy & Environmental Research Center
701-777-5000 or bstevens@undeerc.org

Creation Date: 7/21/2005