

Wind Resource Summary for Dragswolf Site

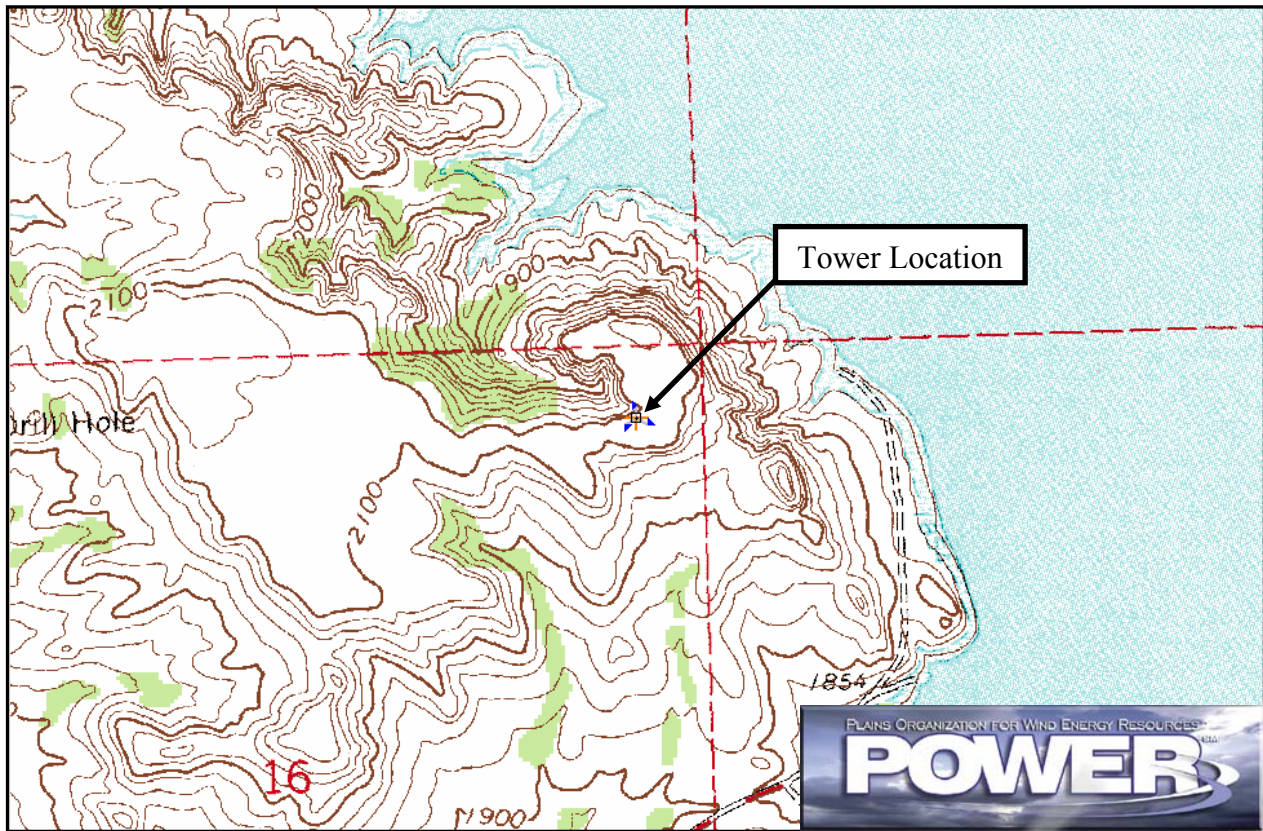
Three Affiliated Tribes

Summer^a 2000

Site Description:

Latitude: N 47° 59' 27"	Township: 152 N
Longitude: W 102° 34' 50"	Range: 93 W
Elevation: 2100 feet	Section: 8
Tower Type: NRG Tilt-Up	Tower Height: 131 feet

The monitoring site was installed 4.3 miles west-northwest of New Town, North Dakota. The tower was instrumented at three levels: 33 ft (10 m), 98 ft (30 m), and 131 ft (40 m). The site was situated on a bluff overlooking Lake Sakakawea to the north and west. The vegetation around the site is predominantly grass with trees in the draws.



Summary Wind Data:	33 ft AGL ^b	98 ft AGL	131 ft AGL
Mean Wind Speed	12.2 mph	13.5 mph	15.5 mph
Maximum, 60-min Mean Wind Speed	44.7 mph at 131 ft AGL – 8/26/2000 11:00 p.m.		
Estimated Wind Power Class ^c	Class 3 (355 W/m ² at 131 ft AGL)		

^a Summer is defined as the months of June, July and August. Summer 2000 begins with July 2000.

Data recovery rates at 33, 98, and 131 feet were 67%, 67%, and 48%, respectively.

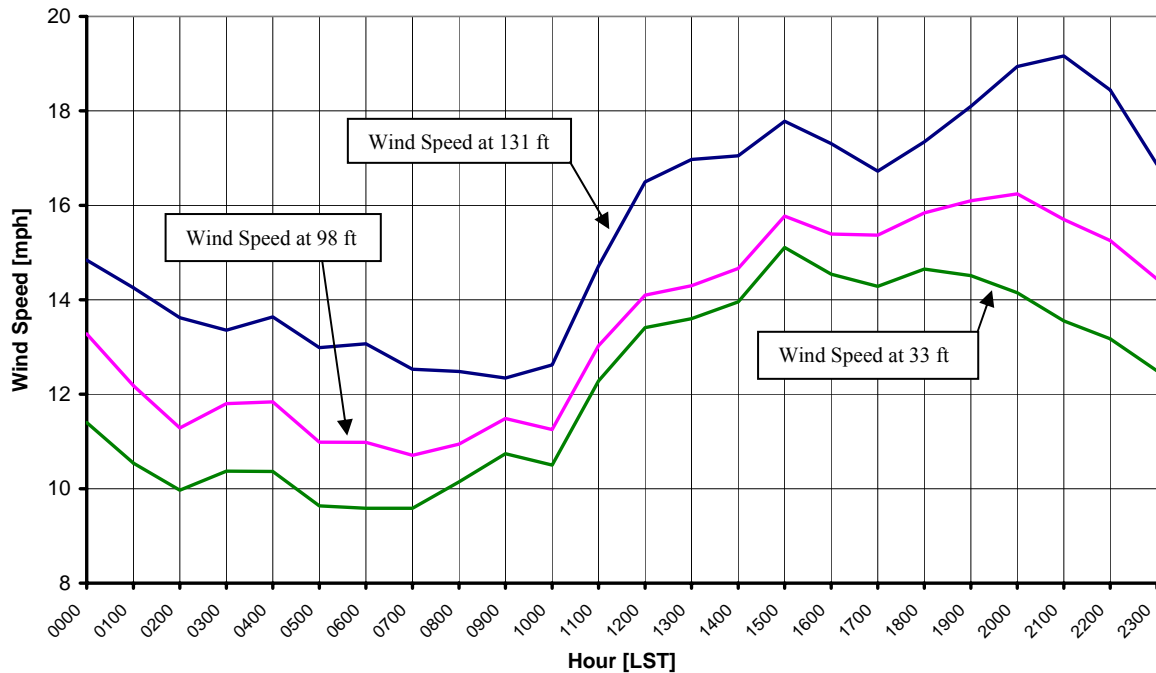
^b Above ground level.

^c Air temperature was not factored into calculations.

Average Hourly Wind Speeds

LST ^d	131 ft AGL		98 ft AGL		33 ft AGL	
	mph	m/s	mph	m/s	mph	m/s
0000	14.8	6.63	13.3	5.93	11.4	5.10
0100	14.3	6.37	12.2	5.44	10.5	4.71
0200	13.6	6.09	11.3	5.05	10.0	4.46
0300	13.4	5.97	11.8	5.28	10.4	4.64
0400	13.6	6.10	11.8	5.29	10.4	4.63
0500	13.0	5.81	11.0	4.91	9.6	4.31
0600	13.1	5.84	11.0	4.91	9.6	4.28
0700	12.5	5.60	10.7	4.78	9.6	4.29
0800	12.5	5.58	10.9	4.89	10.1	4.54
0900	12.3	5.52	11.5	5.14	10.7	4.80
1000	12.6	5.64	11.2	5.03	10.5	4.69
1100	14.7	6.58	13.0	5.82	12.3	5.49
1200	16.5	7.37	14.1	6.30	13.4	5.99
1300	17.0	7.59	14.3	6.39	13.6	6.08
1400	17.0	7.62	14.7	6.56	14.0	6.24
1500	17.8	7.95	15.8	7.05	15.1	6.75
1600	17.3	7.73	15.4	6.88	14.5	6.50
1700	16.7	7.47	15.4	6.87	14.3	6.39
1800	17.3	7.75	15.8	7.08	14.7	6.55
1900	18.1	8.09	16.1	7.20	14.5	6.49
2000	18.9	8.47	16.2	7.26	14.1	6.32
2100	19.2	8.57	15.7	7.02	13.6	6.06
2200	18.4	8.24	15.3	6.82	13.2	5.89
2300	16.9	7.54	14.4	6.46	12.5	5.59

**Three Affiliated Tribes – Dragswolf Site
Summer 2000**



^d Local standard time.



Energy & Environmental Research Center
701-777-5000 or bstevens@undeerc.org

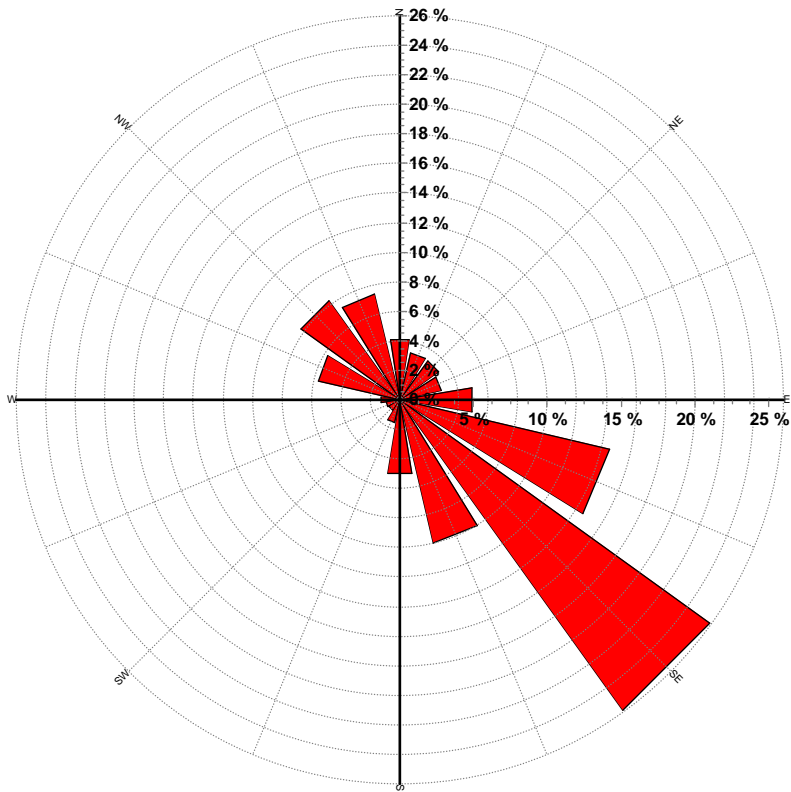
Creation Date: 4/6/2005

Wind Directional Frequency

Winds from the... Frequency (%)

NNW	7.4
NW	8.2
WNW	5.7
W	1.3
WSW	0.9
SW	0.8
SSW	1.6
S	5.0
SSE	10.0
SE	25.9
ESE	14.6
E	5.0
ENE	2.9
NE	3.3
NNE	3.3
N	4.1

Three Affiliated Tribes – Dragswolf Site
Wind Rose for 131 ft AGL
Summer 2000



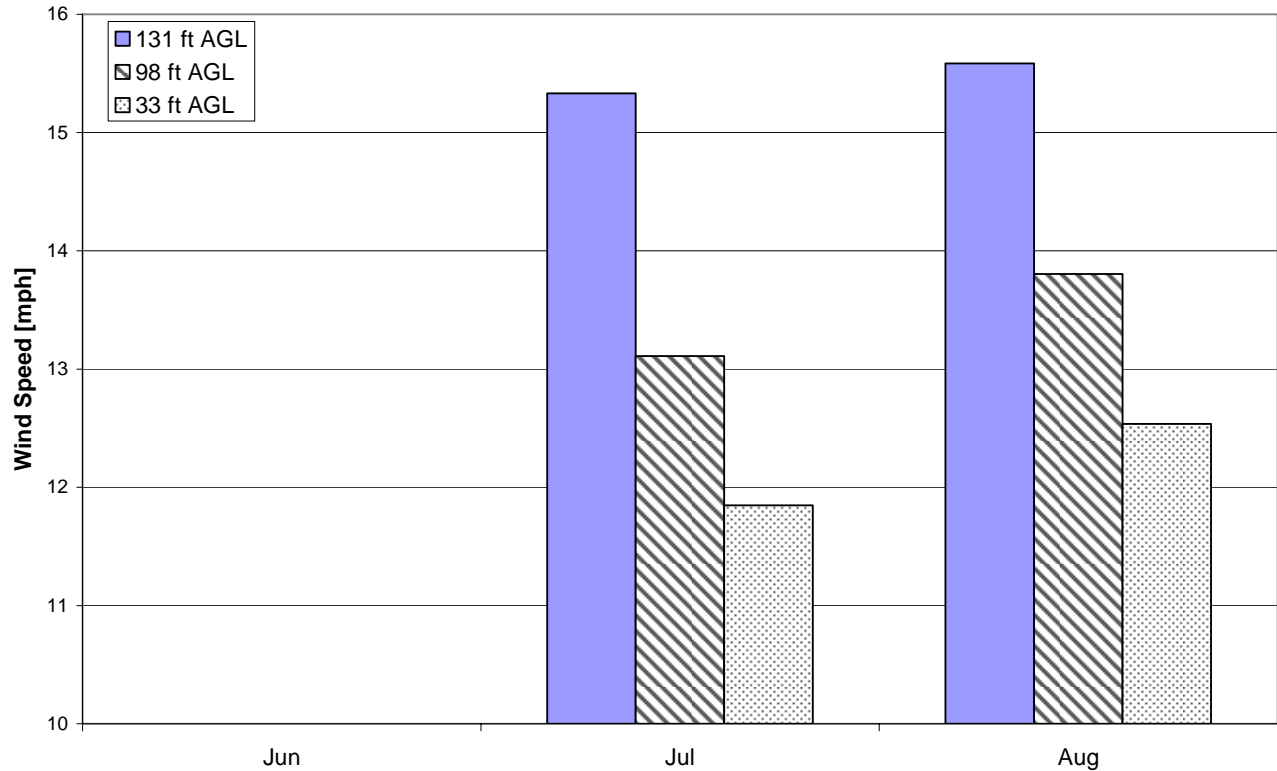
Energy & Environmental Research Center
701-777-5000 or bstevens@undeerc.org

Creation Date: 4/6/2005

Monthly Wind Speed Averages

Month	131 ft AGL		98 ft AGL		33 ft AGL	
	mph	m/s	mph	m/s	mph	m/s
Jun	N/A	N/A	N/A	N/A	N/A	N/A
Jul	15.3	6.85	13.1	5.86	11.8	5.30
Aug	15.6	6.97	13.8	6.17	12.5	5.60

**Three Affiliated Tribes – Dragswolf Site
Summer 2000**



Energy & Environmental Research Center
701-777-5000 or bstevens@undeerc.org

Creation Date: 4/6/2005