

Wind Resource Summary for Kulm Site

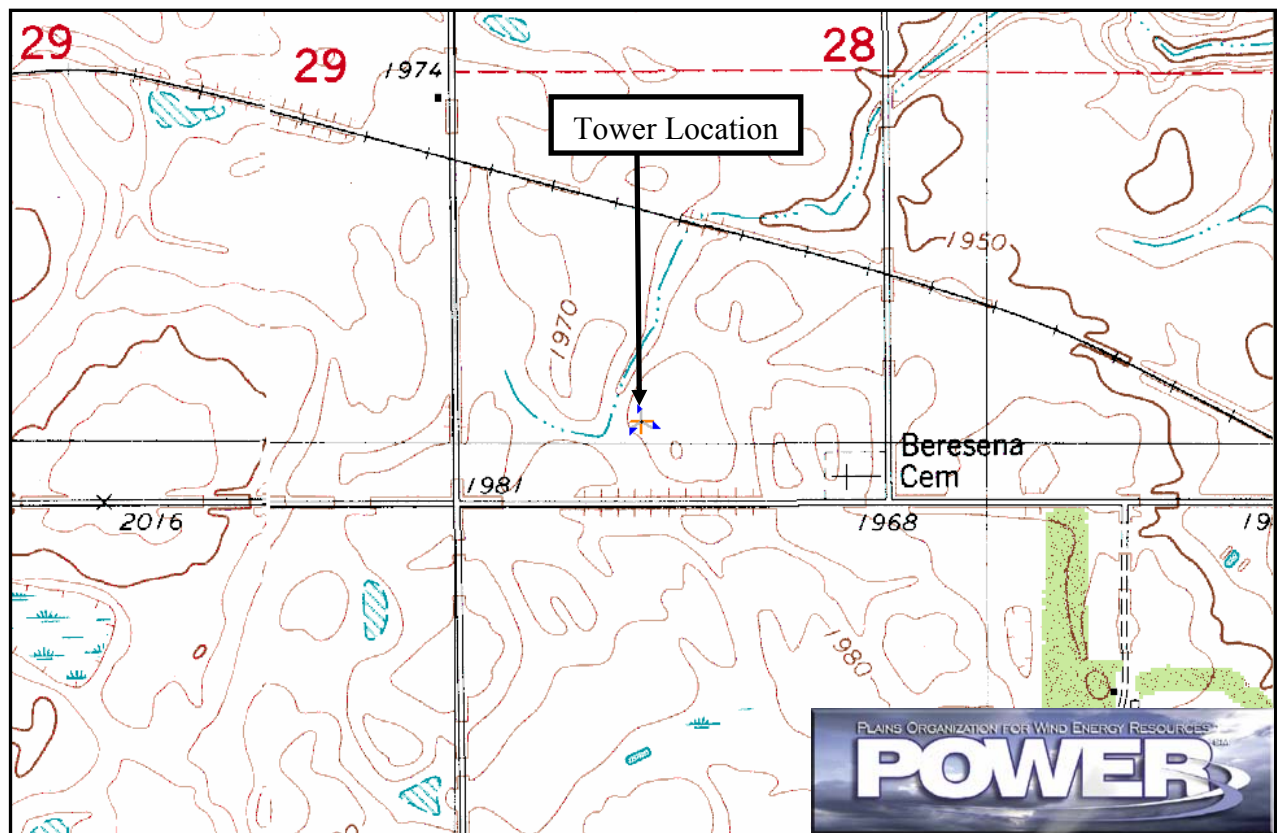
Coteau Hills Wind Development LLC

Monitoring Period:^a 7/13/2000 – 6/30/2005

Site Description:

Latitude: N 46° 17' 56"	Township: 133 N
Longitude: W 98° 51' 58"	Range: 65 W
Elevation: 1970 feet	Section: 28
Tower Type: 42-in. Lattice Tower	Tower Height: 500 feet

The monitoring site is 4 miles east-southeast of the town of Kulm, North Dakota. The tower is instrumented at three levels: 33 feet (10 m), 131 feet (40 m), and 230 feet (70 m). The terrain is rolling crop land with the site located not far from North Dakota's first wind farm.



Summary Wind Data:	33 ft AGL ^b	131 ft AGL	230 ft AGL
Mean Wind Speed	11.6 mph	17.2 mph	18.8 mph
Maximum, 60-min Mean Wind Speed	56.2 mph at 230 ft AGL – 12/12/2004 6:00 a.m.		
Estimated Wind Power Class ^c	Class 4 (555 W/m ² at 230 ft AGL)		

^a Data recovery rates at 33, 131, and 230 feet were 89%, 76%, and 84%, respectively.

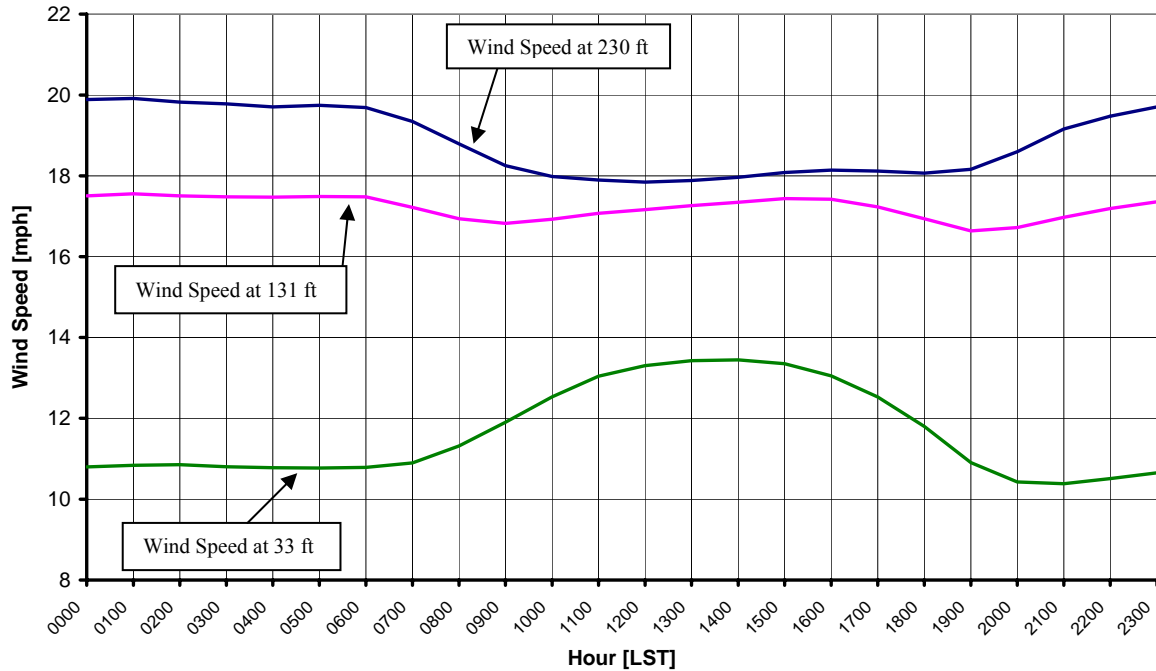
^b Above ground level.

^c Air temperature was not factored into calculations.

Average Hourly Wind Speeds

LST ^d	230 ft AGL		131 ft AGL		33 ft AGL	
	mph	m/s	mph	m/s	mph	m/s
0000	19.9	8.89	17.5	7.82	10.8	4.83
0100	19.9	8.90	17.6	7.85	10.8	4.85
0200	19.8	8.86	17.5	7.82	10.9	4.85
0300	19.8	8.84	17.5	7.82	10.8	4.83
0400	19.7	8.81	17.5	7.81	10.8	4.82
0500	19.7	8.83	17.5	7.82	10.8	4.82
0600	19.7	8.80	17.5	7.82	10.8	4.82
0700	19.3	8.65	17.2	7.70	10.9	4.87
0800	18.8	8.40	16.9	7.57	11.3	5.06
0900	18.3	8.16	16.8	7.52	11.9	5.32
1000	18.0	8.04	16.9	7.57	12.5	5.60
1100	17.9	8.00	17.1	7.63	13.0	5.83
1200	17.8	7.98	17.2	7.67	13.3	5.95
1300	17.9	8.00	17.3	7.72	13.4	6.00
1400	18.0	8.03	17.3	7.76	13.4	6.01
1500	18.1	8.08	17.4	7.80	13.4	5.97
1600	18.1	8.11	17.4	7.79	13.1	5.83
1700	18.1	8.10	17.2	7.70	12.5	5.60
1800	18.1	8.08	16.9	7.57	11.8	5.27
1900	18.2	8.12	16.6	7.44	10.9	4.88
2000	18.6	8.31	16.7	7.47	10.4	4.66
2100	19.2	8.56	17.0	7.59	10.4	4.64
2200	19.5	8.71	17.2	7.68	10.5	4.70
2300	19.7	8.81	17.4	7.76	10.7	4.76

Coteau Hills Wind Development LLC – Kulm Site
7/13/2000 – 6/30/2005



^d Local standard time.



Energy & Environmental Research Center
701-777-5000 or bstevens@underc.org

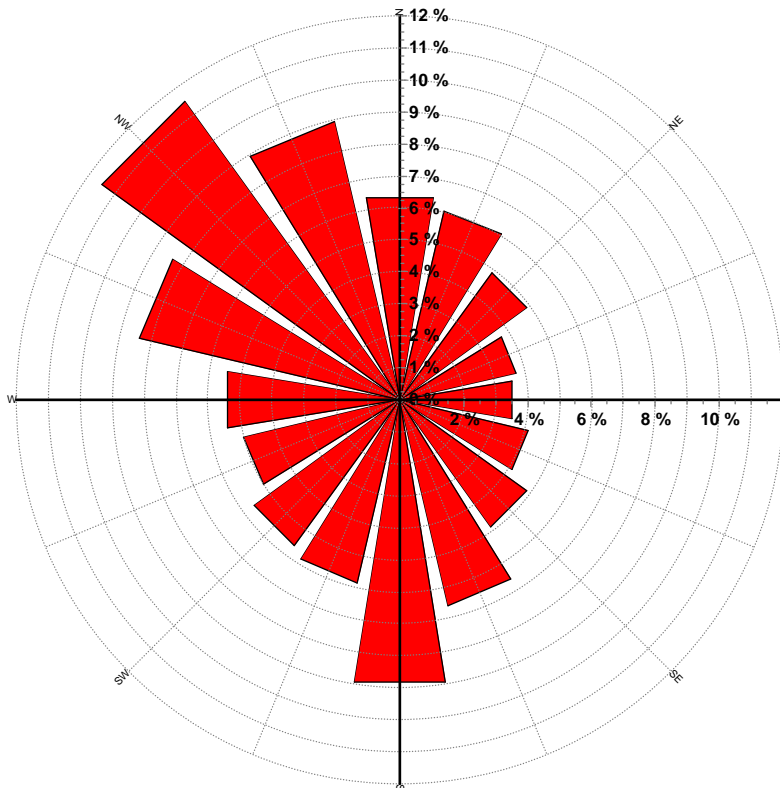
Creation Date: 7/20/2005

Wind Directional Frequency

Winds from the... Frequency (%)

NNW	8.9
NW	11.5
WNW	8.4
W	5.5
WSW	5.0
SW	5.6
SSW	5.9
S	8.9
SSE	6.6
SE	4.9
ESE	4.1
E	3.6
ENE	3.7
NE	4.9
NNE	6.1
N	6.4

Coteau Hills Wind Development LLC – Kulm Site
Wind Rose for 230 ft AGL
7/13/2000 – 6/30/2005



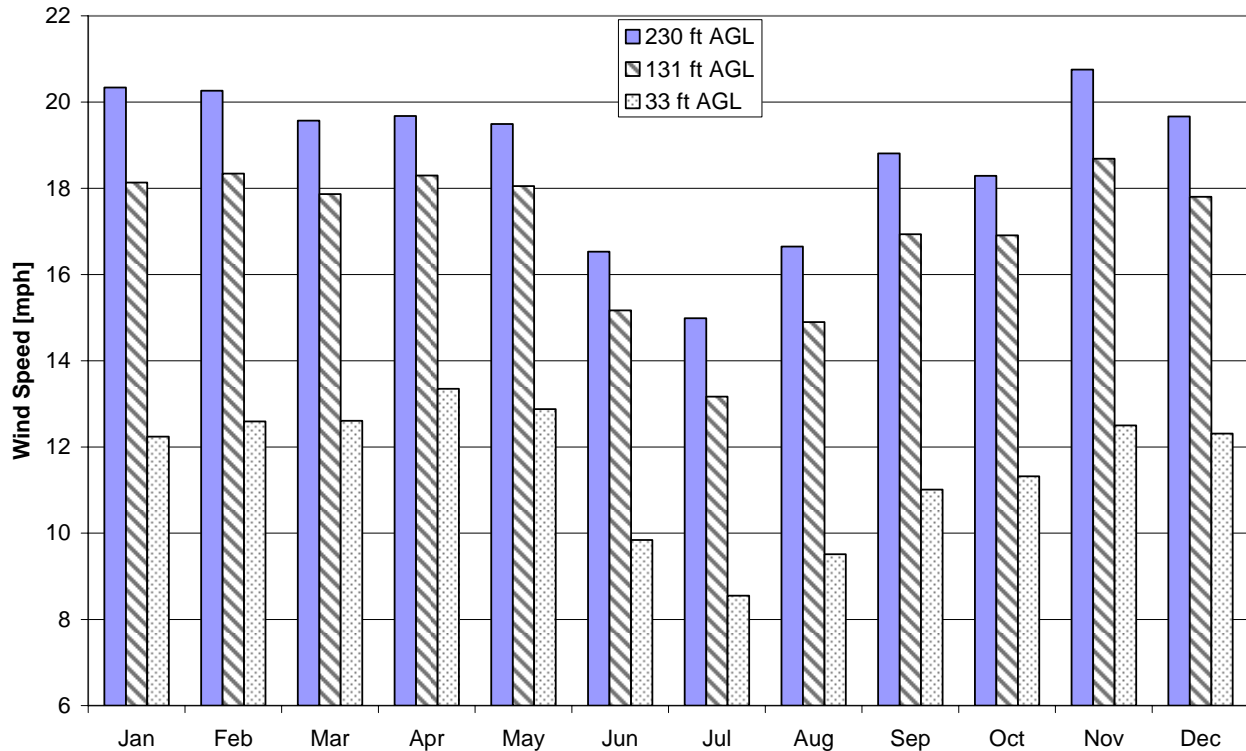
Energy & Environmental Research Center
701-777-5000 or bstevens@undeerc.org

Creation Date: 7/20/2005

Monthly Wind Speed Averages

Month	230 ft AGL		131 ft AGL		33 ft AGL	
	mph	m/s	mph	m/s	mph	m/s
Jan	20.3	9.09	18.1	8.11	12.2	5.47
Feb	20.3	9.06	18.3	8.20	12.6	5.63
Mar	19.6	8.75	17.9	7.99	12.6	5.64
Apr	19.7	8.80	18.3	8.18	13.4	5.97
May	19.5	8.71	18.0	8.07	12.9	5.76
Jun	16.5	7.39	15.2	6.78	9.8	4.40
Jul	15.0	6.70	13.2	5.89	8.6	3.82
Aug	16.6	7.44	14.9	6.66	9.5	4.25
Sep	18.8	8.41	16.9	7.57	11.0	4.92
Oct	18.3	8.17	16.9	7.56	11.3	5.06
Nov	20.8	9.28	18.7	8.35	12.5	5.59
Dec	19.7	8.79	17.8	7.96	12.3	5.50

Coteau Hills Wind Development LLC – Kulm Site
7/13/2000 – 6/30/2005



Energy & Environmental Research Center
701-777-5000 or bstevens@undeerc.org

Creation Date: 7/20/2005